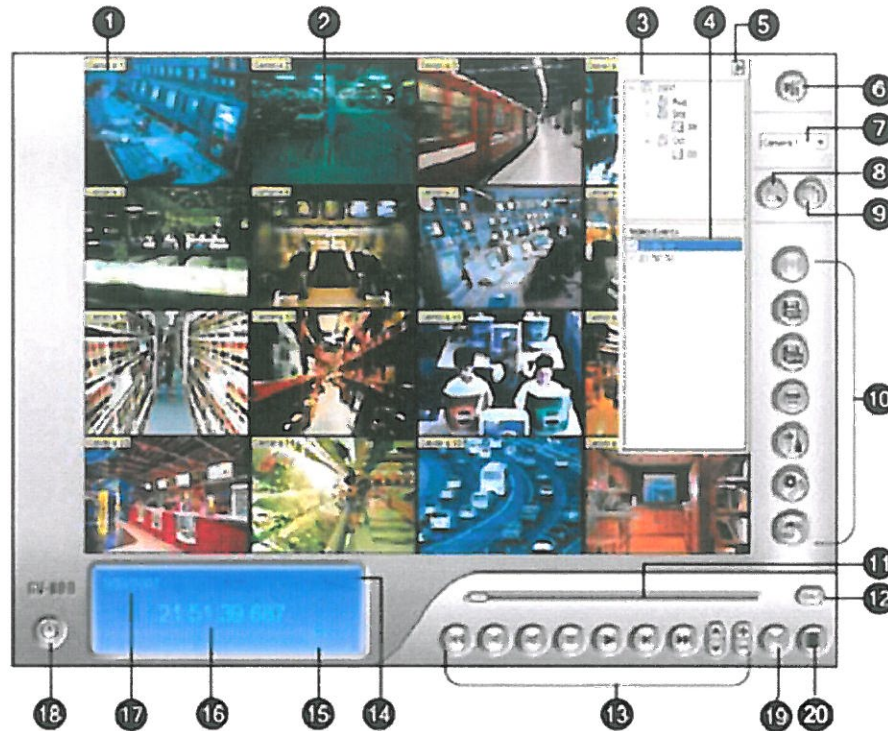


### 3. Video Playback

To view recorded video, follow the steps below:

1. In Multicam, click on the “Viewlog” icon.
2. Select “Video/Audio Log”.
3. Alternatively, in Multicam, click on “F10” on the keyboard.



The controls in the ViewLog window:

No.	Name	Description
1	Camera Name	Indicates the given camera name.
2	Camera View	Displays the playback video.
3	Date Tree	Displays date folders.
4	Video Event List	Displays video events within a certain date folder.
5	Arrow Switch	Switches between video event list and multiple host connection list.
6	View Mode	Sets screen divisions: Single View, Panorama View, Quad View or Multi View. Single View also includes these options: Standard, Thumbnail, Mega Pixel (PIP) and Mega Pixel (PAP).
7	Camera Select	Sets a desired camera for display.
8	Advanced	Accesses the basic, advanced search, timeline search and reloads video event list.
9	Normal	Displays the date tree, video event list and multiple host connection list.
10	Function Panel	Provides various settings for ViewLog.

11	Slider	Moves the slider to rewind or forward the video during playback.
12	Audio Playback	Enables audio playback.
13	Playback Panel	Contains typical playback control buttons.
14	Function Icons	A highlighted icon indicates an enabled function. From left to right are the A to B Mode, auto playing of next events, the contrast and brightness function, the light enhancement and equalization function, the sharpness and smoothness function, the grayscale function, reconnection to Remote ViewLog, the defogging function and stabilizer function.
15	Playback Speed	Indicates the playback speed. x1 represents normal playback speed.
16	Time Display	Indicates the time of the playback video.
17	Date Display	Indicates the date of the playback video.
18	Exit	Closes or minimizes the ViewLog window.
19	A to B Mode	Plays repeatedly the set frames A to B.
20	Frame by Frame / Real Time	Plays back video frame by frame or on real time.

### 3.1 Frame by Frame/Real Time Playback

By Default, Viewlog plays back video with frame by frame mode for Panorama, Multi View, or Quad View. This mode allows each full frame to load completely before playing back the video with its maximum frames recorded. However, video playback in frame by frame mode does not allow audio to be played back at the same time. To listen to recorded audio, switch to real time mode (**button 20**) as shown above. Playback video with frame by frame mode may be more bandwidth and CPU consuming.

To playback video via real time mode, it will save video rendering time by dropping certain frames, if necessary, to provide real time playback appearance. Real time mode is default when playing back video with Single View.

### 3.2 Multiple Channels Playback

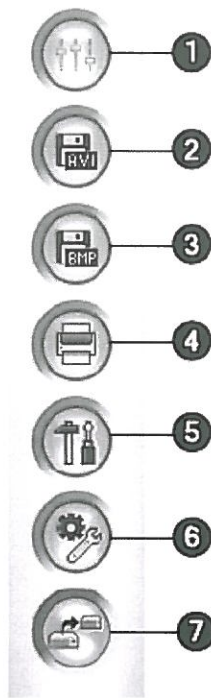
Instead of playing back one channel via Single View, Viewlog also gives you the option to playback 4 channels via Quad View, or up to 16 channels via Multi View. To switch from Single View to Quad View or Multi View, click on **button 6** as shown above.

By default Quad View 1 contains cameras 1 to 4, while Multi View 1 contains cameras 1 to 16. Viewlog provides up to 10 pages of Quad View and Multi View for channel customization.

1. To customize Quad View pages, click on “**Settings**” button, then select “**Quad View**” tab. Select desired Quad View page number then drag and drop cameras into the page from the camera list on the right.
2. To customize Multi View pages, click on “**Settings**” button, then select “**Multi View**” tab. Select desired Multi View page number then drag and drop cameras into the page from the camera list on the right.

1. For detailed instruction, refer to p.156 of v8.3 User Manual

### 3.3 Backup Video Files



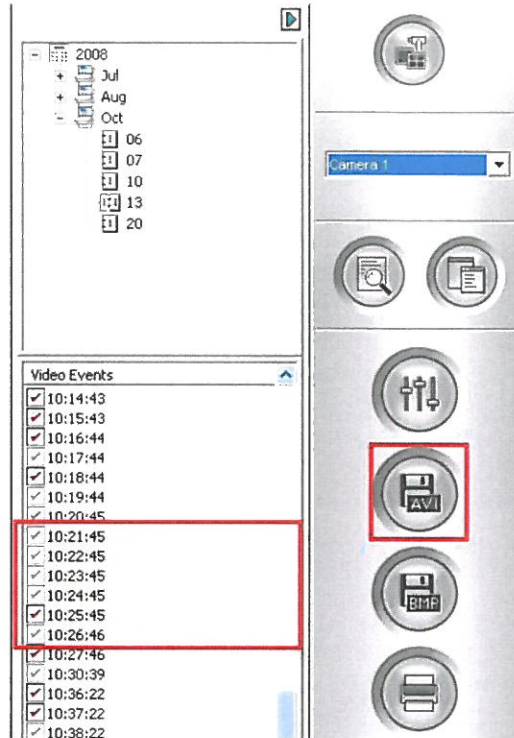
The controls in the Function Panel:

No.	Name	Description
1	Effects	Adds effects to the images. The effect options include: Sample, Contrast/Brightness, Light Enhancement, Equalization, Sharpen, Smooth, Grayscale, Undo to Prev. Action, Undo All Effects, Copy Image to Clipboard, Sample and Advanced Video Analysis.
2	Save As AVI	Save a video file as avi or exe format. <i>See Merging and Exporting Video</i> later in this chapter.
3	Save As Image	Save a video image as bmp, jpg, gif, png, or tif format. <i>See Saving Images</i> later in this chapter.
4	Print	Specifies various settings for printing.
5	Setting	Accesses system settings of ViewLog. <i>See Advanced Settings</i> later in this chapter.
6	Tools	Brings up these options: Object Search, Advanced Log Browser, Delete, Remote ViewLog Service, Remote Storage System, Address Book, Display GIS Window, Select Map API, and Tool Kit. <i>See Object Search, Advanced Log Browser, Playing Back Over Internet Using Remote ViewLog Service</i> later in this chapter.
7	Backup	Backs up video files. <i>See Backing Up and Deleting Files</i> in Chapter 5.

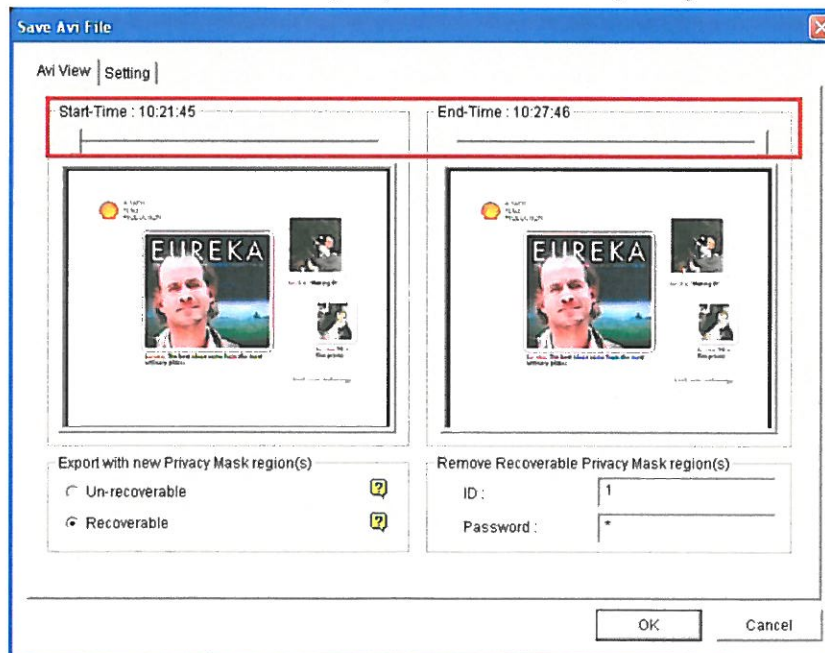
### 3.3.1 Save to USB

To backup a video clip or a few video clips from a certain camera, **Save As AVI** option provides the fastest and easiest backup procedure.

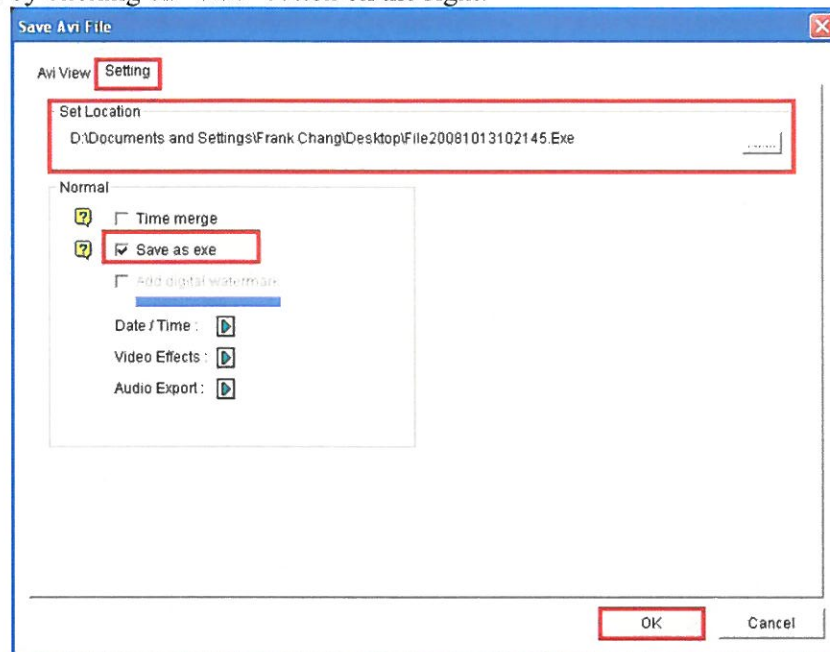
1. In Viewlog, highlight desired video event (or select multiple events by clicking on the events while holding down CTRL on the keyboard).



2. Click on the “**Save As AVI**” icon.
3. Select the desired **Start** and **End time** if you prefer to extract only a segment of the video file(s) selected.



4. Under “**Setting**” tab, select the location on your system where you would like the video file(s) to be saved into by clicking on “.....” button on the right.



5. Check on “**Save as exe**”.
  6. Click “**OK**” to save the desired video file(s) into above destination.
2. “*Save as exe*” option allows Viewlog to extract video file(s) with GeoVision codec attached. Without the codec, GeoVision recorded video will not be able to play under Windows Media Player. Therefore, if the backed up video is intended to be played on a third-party PC, such as police department or court, it is necessary to use “*Save as exe*” option.
  3. GeoVision video codec can be also be installed separately from the GeoVision Main System DVD or it can be downloaded from [www.usavisionsys.com/download](http://www.usavisionsys.com/download)
  4. For detailed instruction, refer to p.149 of v8.3 User Manual

### 3.3.2 Save as AVI

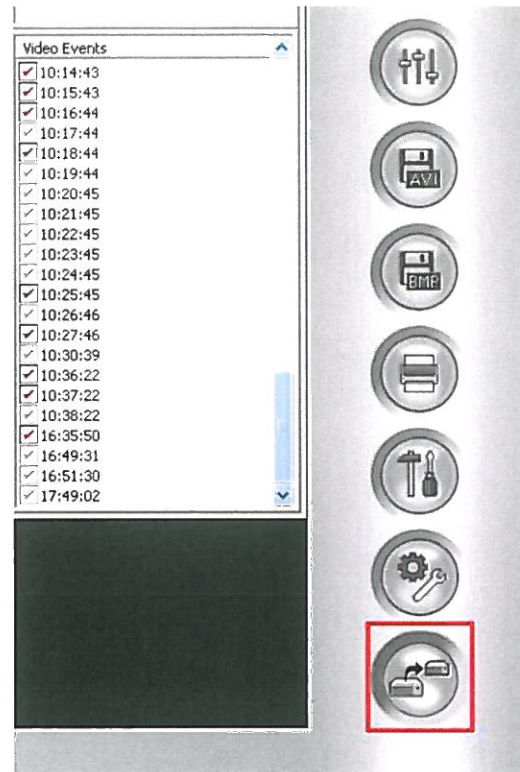
Alternatively, if the backed up video is intended to be played on another GeoVision DVR, or on a PC in which GeoVision Codec was already installed, saving video as .AVI instead of .EXE will produce a simpler .AVI extension file without any codec attached.

1. To Save as AVI instead of .EXE, simply follow instructions from steps 1 to 4 in section 3.3.1.
2. Ignore step 5 “**Save as exe**” option.
3. Click “**OK**” to save the desired video file(s) into above destination.

### 3.3.3 Burn to CD/DVD

In order to backup multiple video files from multiple days and multiple cameras, **Backup** option allows user to backup a large quantity of video files to a hard drive, network drive, or burn on a CD/DVD. Users also have the option to make a copy of the Viewlog software while performing **Backup**.

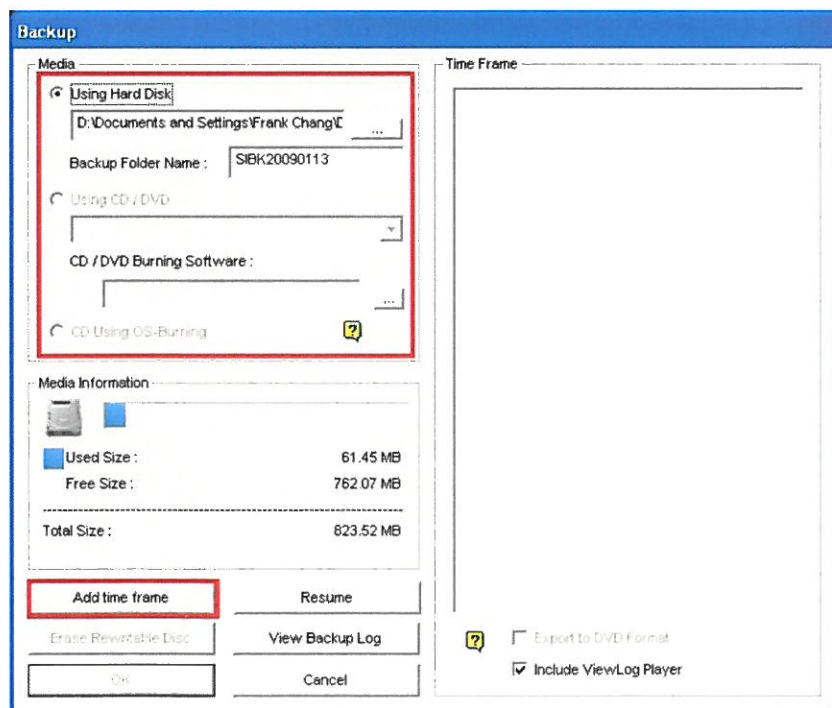
1. In Viewlog, Click on the “**Backup**” icon.



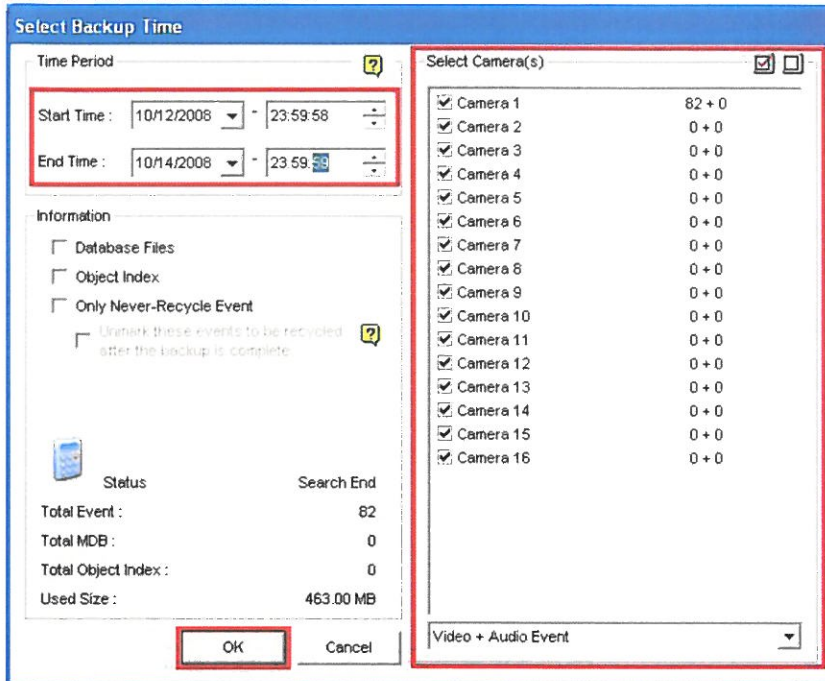
2. In the Backup window, select backup method through either “**Using Hard Disk**”, “**Using CD/DVD**”, or “**CD Using OS-Burning**”.

- ✓ “**Using Hard Disk**” allows video to be backed up to a certain hard drive or on a network drive.

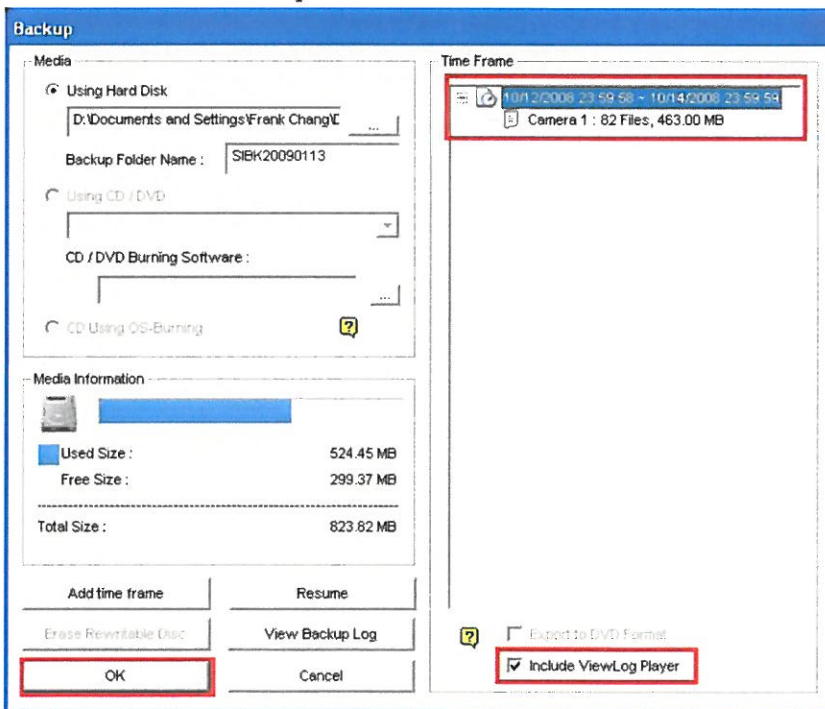
- ✓ “**Using CD/DVD**” allows video to be burned onto CD/DVD directly via third-party burning software. For GV-DVR Systems, Nero is preinstalled. Select Nero Quick Start as the path.



3. Select “Add time frame”.



4. Select desired time period by assigning **Start** and **End Time**. Once the time period has been selected, Viewlog will automatically search for video and audio files within that time period and display the total number of files in the box on the right.
5. Select cameras for backup then click”OK”.



6. Check “**Include ViewLog Player**” option then click “OK” to start backup process.

✓ For detailed instruction, refer to p.194 of v8.3 User Manual